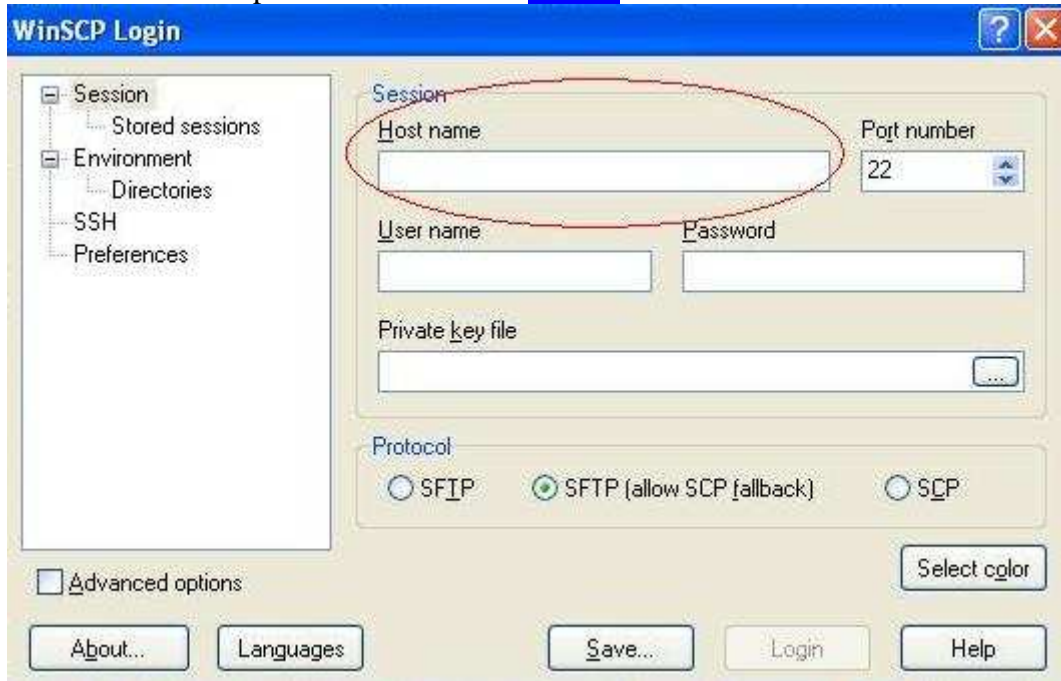


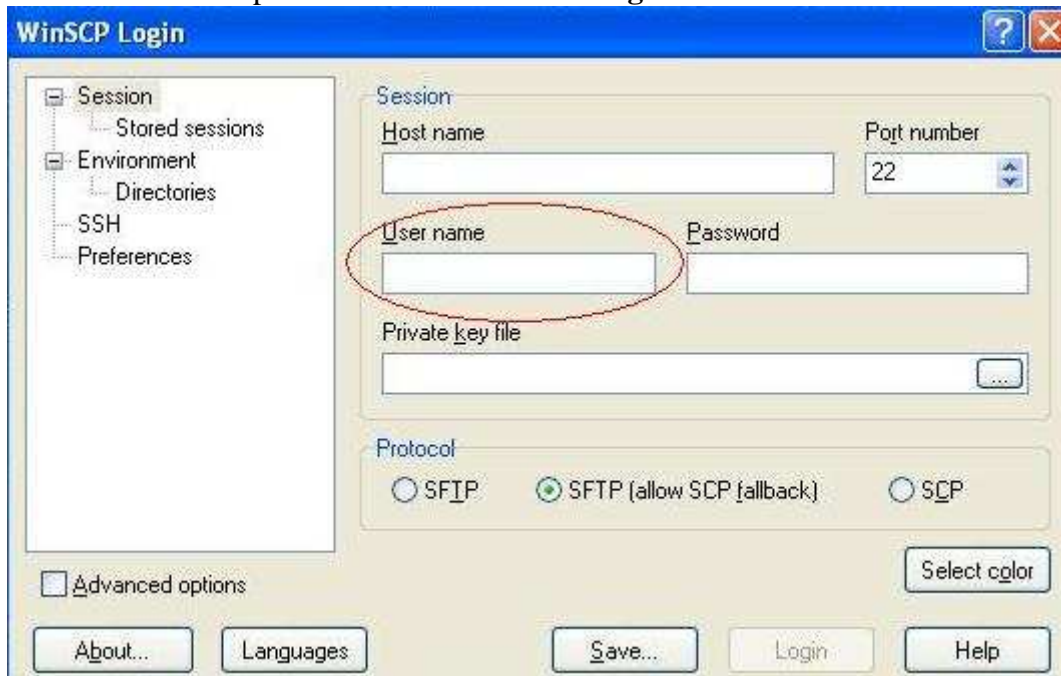
## Tutorial WINSCP

Passos:

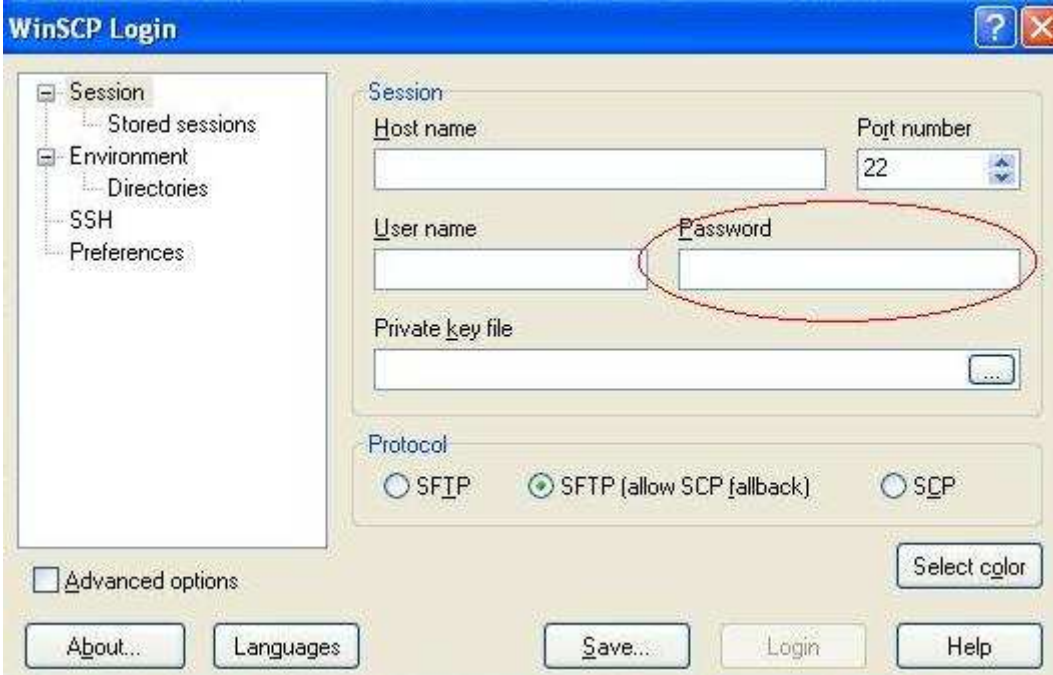
1. Executar o WinSCP
2. Preencher o campo "Host name" com [poli.br](http://poli.br)



3. Preencher o campo "User name" com o seu **login do webmail**

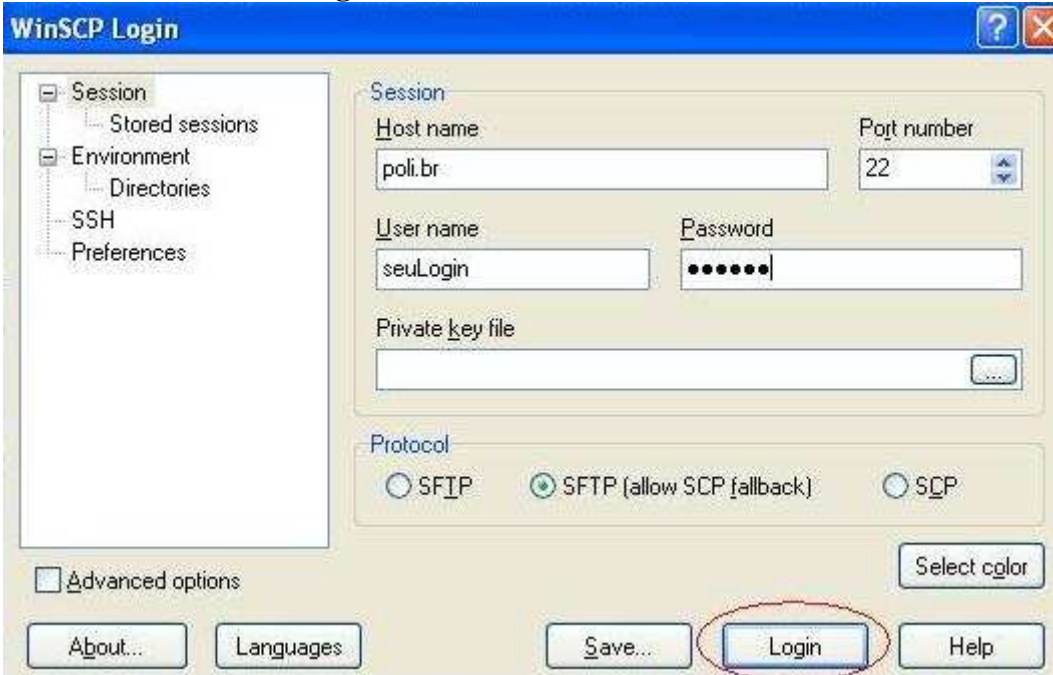


#### 4. Preencher o campo "Password" com a **senha** da sua **conta de webmail**



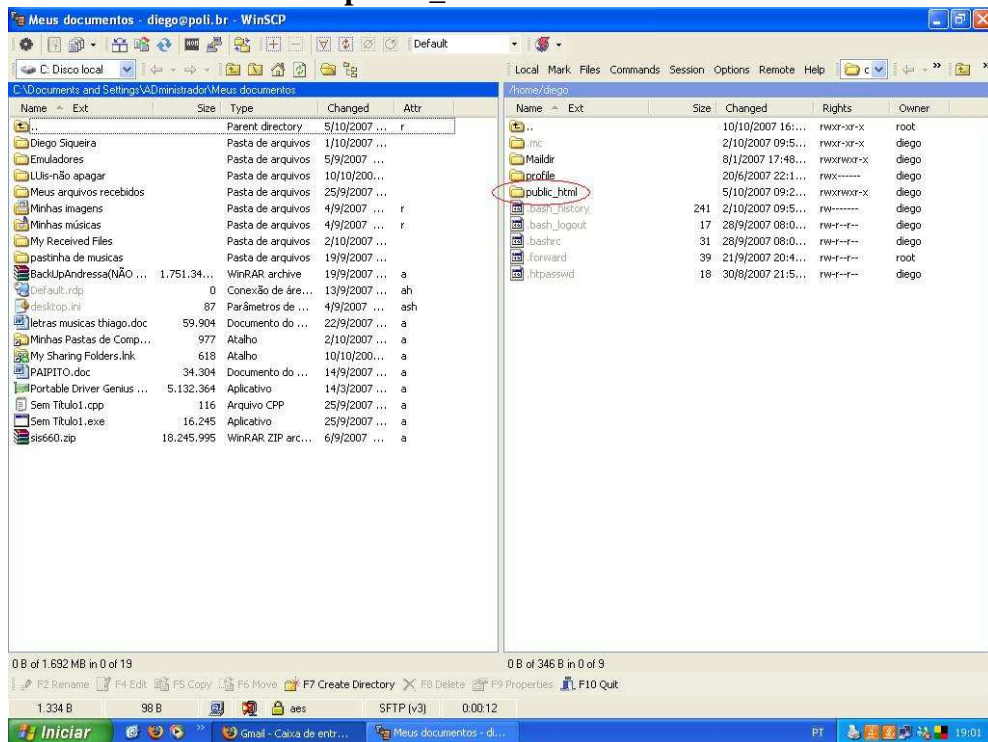
The image shows the WinSCP Login dialog box. On the left is a tree view with 'Session' selected. The main area contains fields for 'Host name', 'Port number' (set to 22), 'User name', 'Password', and 'Private key file'. The 'Password' field is highlighted with a red oval. Below these fields are radio buttons for 'Protocol' (SFIP, SFTP (allow SCP (allback)), SCP), with SFTP selected. At the bottom are buttons for 'About...', 'Languages', 'Save...', 'Login', and 'Help', along with a 'Select color' button and an 'Advanced options' checkbox.

#### 5. Pressionar o botão "**Login**" ou a tecla "**Enter**"

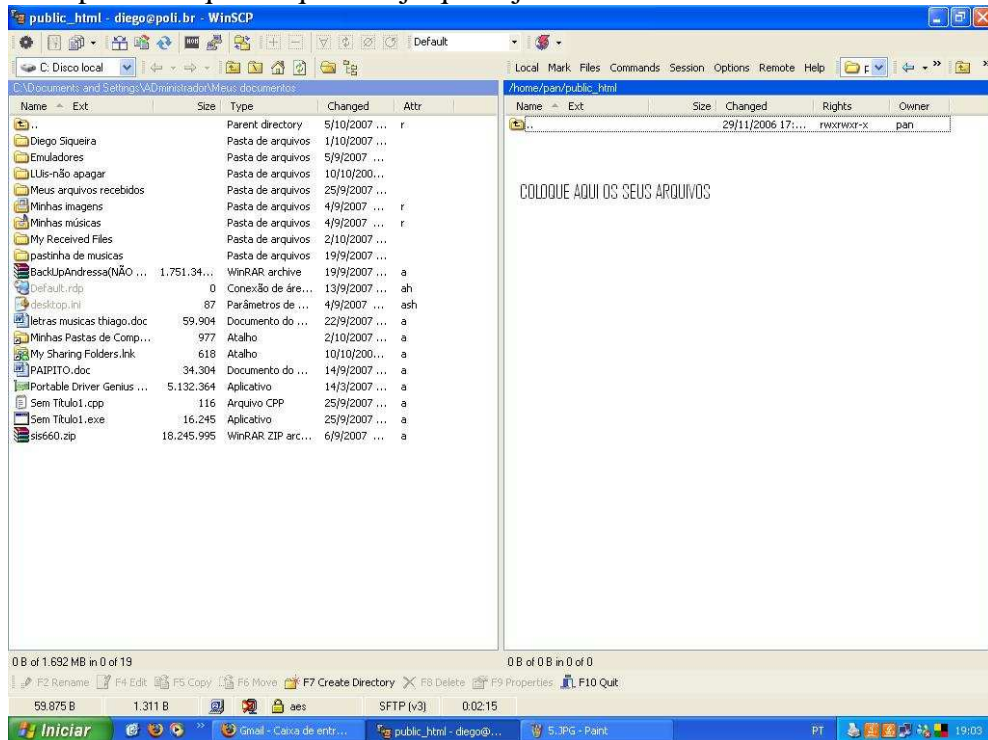


The image shows the WinSCP Login dialog box with the fields filled in: 'Host name' is 'poli.br', 'Port number' is 22, 'User name' is 'seuLogin', and 'Password' is masked with dots. The 'Login' button at the bottom is highlighted with a red oval. The 'Protocol' section remains the same, with SFTP selected. The 'Advanced options' checkbox is still unchecked.

## 6. Selecionar o diretório "public\_html"



## 7. Copiar os arquivos que deseja que sejam exibidos na web nesse diretório.



Todos os itens que estiverem no diretório "public\_html" serão exibidos no link: [www.poli.br/~SeuLoginDoWebmail](http://www.poli.br/~SeuLoginDoWebmail)

Atenciosamente,  
Diego Siqueira